

RANDALL ROAD MULTIMODAL IMPROVEMENTS



PROJECT OVERVIEW

Randall Road is an important Kane County roadway that serves approximately 35,000 to 50,000 vehicles daily. The corridor is home to a variety of busy commercial centers, recreational facilities and residential areas. To better meet the needs of this changing area, the Kane County Division of Transportation (KDOT) is working to enhance Randall Road and create a more accessible roadway for pedestrians, bicyclists and transit riders alike.

While Randall Road is one of the busiest local roadways for motorists, it is not as accessible for those using other transportation methods. There are few sidewalks and pedestrian crosswalk signals at Randall Road's intersections that allow for safe walking in the study area. For bicyclists, Ride Illinois' Bicycle Level of Service study indicated that road segments within the study area have very low levels of safety and comfort. There are no marked bicycle lanes, and the existing paved shoulders are too narrow. Last, despite the high number of bus stops along Randall Road, many are not connected to nearby sidewalks or destinations, making them inaccessible to some users.

To provide safe access for all types of travelers along the corridor, KDOT is conducting a preliminary engineering and environmental study on Randall Road. This study will develop and review alternatives for the construction of new shared use paths and sidewalks, intersection crossings, signage and other related improvements on Randall Road.



STUDY AREA

The study area includes a nine-mile stretch of Randall Road from College Green Drive in Elgin to County Line Road in Algonquin. These limits have been divided into two major corridors: south of I-90 and north of I-90. The corridors are further divided into multiple segments that may undergo construction in phases based on funding.



RANDALL ROAD MULTIMODAL IMPROVEMENTS



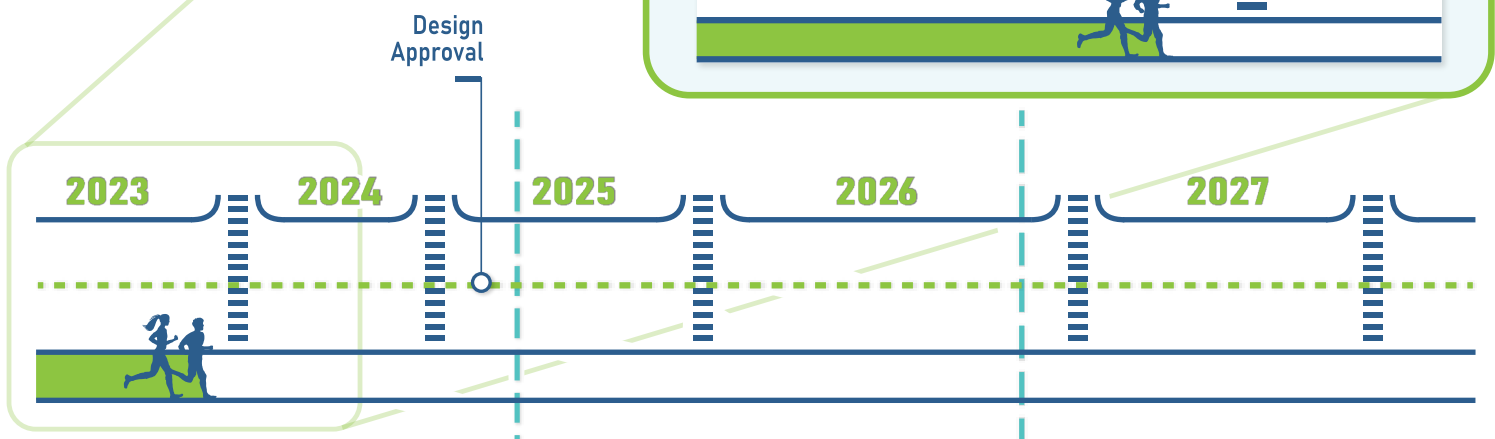
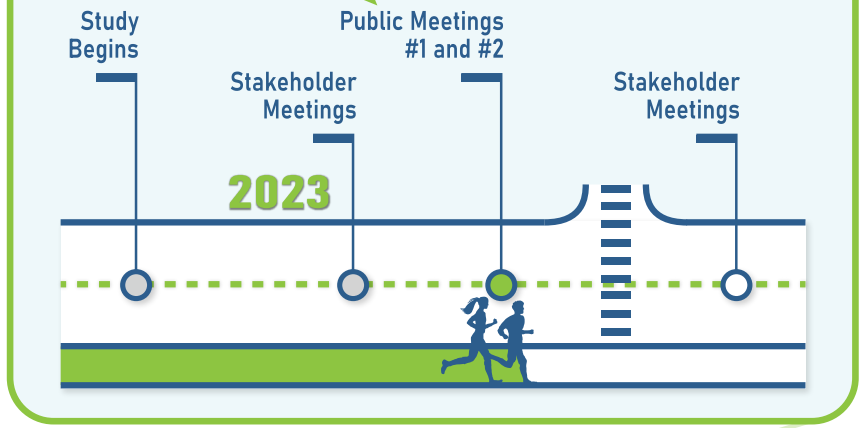
KDOT

KANE COUNTY DIVISION OF TRANSPORTATION

PROJECT PHASES AND TIMELINE

Kane County is funding the Phase I study. Future phases will be funded and implemented in coordination with local communities, Pace Suburban Bus, the Illinois Department of Transportation and various other organizations.

WE ARE HERE



PHASE I

Preliminary Engineering

- Analyze existing and future conditions
- Gather public feedback
- Identify and evaluate alternatives
- Select and refine a preferred alternative

PHASE II

Design Engineering

- Sections may advance to Phase II separately
- Further develop design and construction plans
- If needed, acquire any right-of-way and permits

PHASE III

Construction

- If funding is secured and projects are ready, improvements are built and implemented



PROVIDE YOUR COMMENTS

Questions and comments can be submitted to the study team via the following methods:



Scan me to learn more!

✉ Kane County Division of Transportation
Attn: Jennifer O'Connell
41W011 Burlington Road
St. Charles, IL 60175

☎ Phone: 630-584-1170

🌐 www.RandallRoadMultimodal.org/ContactUs

✉ oconnelljennifer@co.kane.il.us

